

НАРУЖНЫЕ ГАЗОВЫЕ КОТЛЫ

City Plus 24HE, 30HE

ТЕХНИЧЕСКИЕ ХАРАКТЕРИСТИКИ

По вопросам продаж и поддержки обращайтесь:

Архангельск (8182)63-90-72
Астана +7(7172)727-132
Астрахань (8512) 99-46-04
Барнаул (3852) 73-04-60
Белгород (4722)40-23-64
Брянск (4832)59-03-52
Владивосток (423)249-28-31
Волгоград (844)278-03-48
Вологда (8172)26-41-59
Воронеж (473)204-51-73
Екатеринбург (343)384-55-89
Иваново (4932)77-34-06
Ижевск (3412)26-03-58
Казань (843)206-01-48

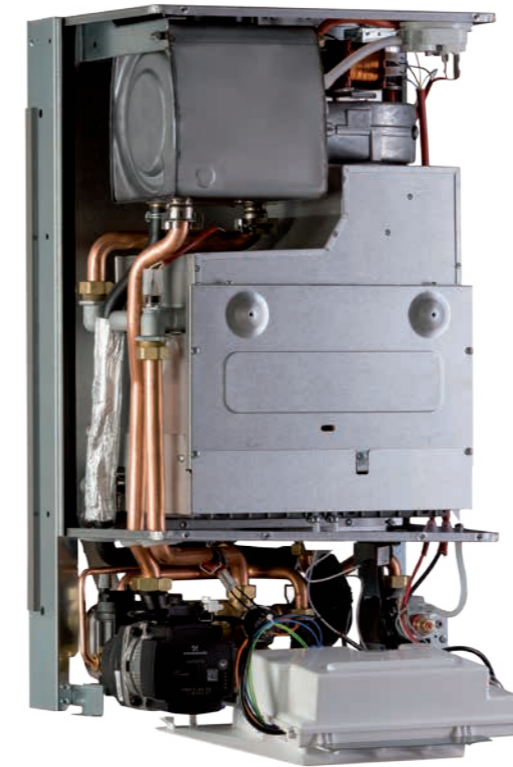
Калининград (4012)72-03-81
Калуга (4842)92-23-67
Кемерово (3842)65-04-62
Киров (8332)68-02-04
Краснодар (861)203-40-90
Красноярск (391)204-63-61
Курск (4712)77-13-04
Липецк (4742)52-20-81
Магнитогорск (3519)55-03-13
Москва (495)268-04-70
Мурманск (8152)59-64-93
Набережные Челны (8552)20-53-41
Нижний Новгород (831)429-08-12
Новокузнецк (3843)20-46-81

Новосибирск (383)227-86-73
Омск (3812) 21-46-40
Орел (4862)44-53-42
Оренбург (3532)37-68-04
Пенза (8412)22-31-16
Пермь (342)205-81-47
Ростов-на-Дону (863)308-18-15
Рязань (4912)46-61-64
Самара (846)206-03-16
Санкт-Петербург (812)309-46-40
Саратов (845)249-38-78
Севастополь (8692) 22-31-93
Симферополь (3652) 67-13-56
Смоленск (4812)29-41-54

Сочи (862)225-72-31
Ставрополь (8652)20-65-13
Сургут (3462) 77-98-35
Тверь (4822)63-31-35
Томск (3822)98-41-53
Тула (4872)74-02-29
Тюмень (3452)66-21-18
Ульяновск (8422)24-23-59
Уфа (347)229-48-12
Хабаровск (4212) 92-98-04
Челябинск (351)202-03-61
Череповец (8202)49-02-64
Ярославль (4852)69-52-93

сайт: <http://italtherm.nt-rt.ru/> || эл. почта: imr@nt-rt.ru

City Plus HE Series



Heating and instant domestic hot water production for high efficiency installations

City Plus HE is the innovative condensing boiler specially designed by Italtterm for high temperature traditional installations.

Thanks to the increased water passages, it is possible to exploit the condensing technology even in high temperature traditional installations.

City Plus HE represents the ideal solution both as first installation and replacement.



Main features

- Flue gas side stainless steel condenser
- Ideal for replacing high temperature heating systems
- RANGE RATED certified: the maximum heat input of the boiler can adapt to the actual energy need of the installation
- High efficiency fully electronically modulating pump (ErP ready)
- Ultra compact sizes (W=400 H=700 D=300 mm)
- Easy to be installed, indoor or even outdoor in a partially protected place (0÷60°C)
- It can be managed by remote control
- Double-thermoregulation, ideal for high/low temperature multi-zone systems
- IP X4D electrical protection
- Microprocessor electronic system
- Chimney sweep mode
- Electrical three-way valve
- Brass hydraulic group
- Automatic hydraulic by-pass, outside the exchanger
- Expansion vessel 8 liters

Model	L x H x P (mm)	Weight (Kg)	Qn (kW)	η at Qn (%)	Specific flow rate according to EN625 (l/min)	Efficiency class energy	
						III	F
City Plus 24 HE	400 x 700	35.5	25.5	102.3	15.0	B	XL-A
City Plus 30 HE	x 300	35.5	29.5	102.5	17.3	B	XXL-B

Legend: Qn = rated/minimum heat input • η = efficiency. * With boiler working in condensing mode (flow 50°C; return 30°C).

Note: N. 9 BOILERS PER PALLET

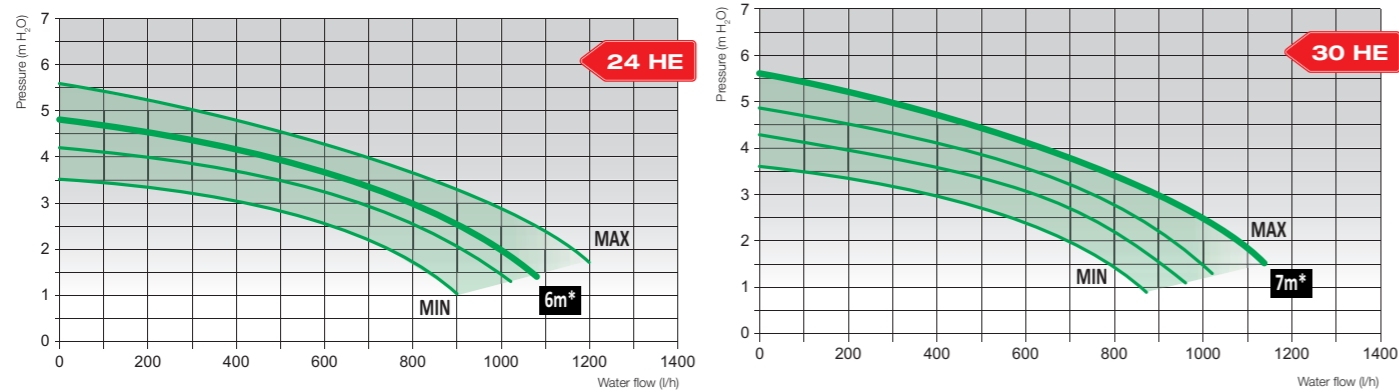
Variable electronic speed pump - ErP ready

(The curves are referred to the pump capacity available to the system)

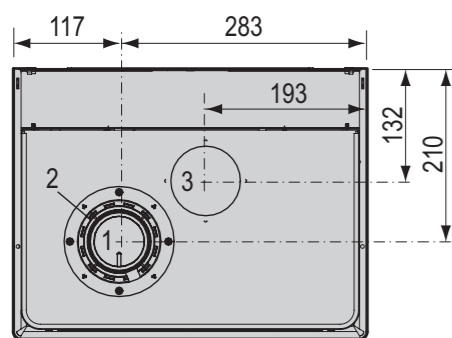
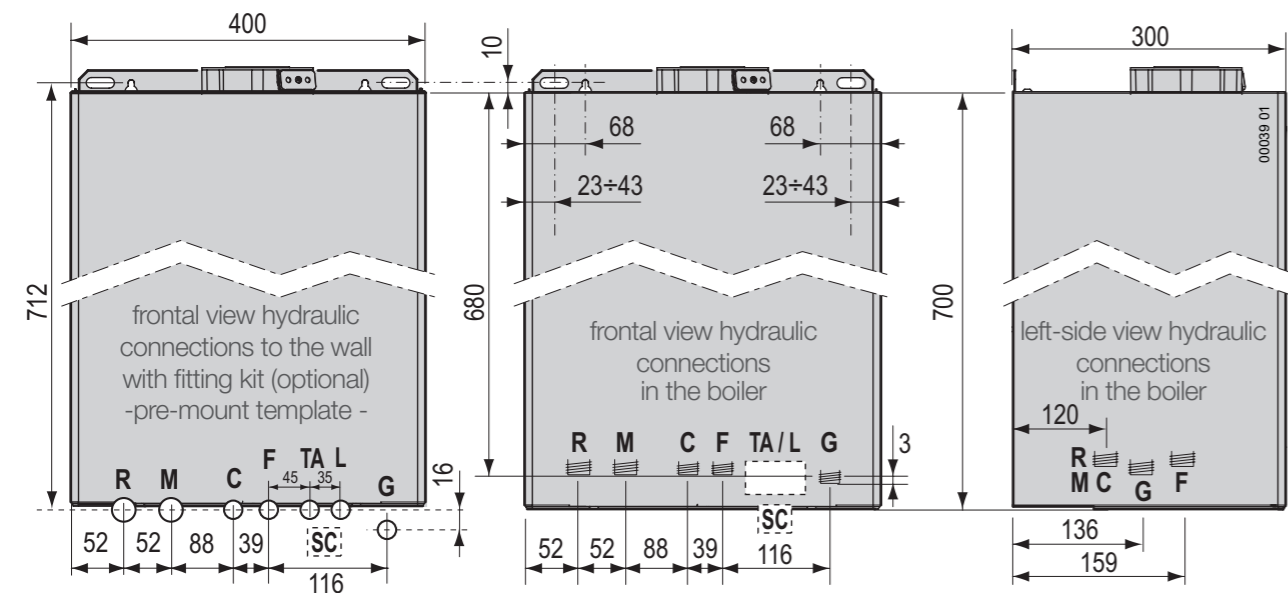
Remark: the graphs below show the factory set value of the pump, for each model. The curves are referred to the pump capacity available to the system, net of the pressure loss of boiler's internal circuits.

*factory setting

City Plus 24 HE - 30 HE



Dimensions City Plus 24 HE - 30 HE



Upper side view (model HE)

Legend:

- 1** Flue outlet
- 2** Air inlet for coaxial flue systems
- 3** Air inlet for split flue systems
- S** Flue gas outlet (natural draught)
- G** Gas: connection in the boiler (3/4"); connection on template with original fitting kit (1/2")
- R** System delivery (3/4")
- M** System return (3/4")
- C** Hot water outlet (1/2")
- F** Cold water inlet (1/2")
- TA/L** Indicative position of electrical supply and room thermostat connections
- TA** Room thermostat
- L** Power line
- SC** Indicative position of condensate drain (HE models only)

Product data sheet (ErP)

Manufacturer name: Italtherm		Models	City Plus 24 HE	City Plus 30 HE
Element	Symbol	Unit	Value	Value
DHW heating: declared load profile			XL	XXL
CH heating: seasonal energy efficiency class			B	B
DHW heating: energy efficiency class			A	B
Nominal heat output	$P_{nominal}$	kW	24	29
CH heating: yearly energy consumption	Q_{HE}	GJ	73	77
DHW heating: yearly energy consumption	A_{rc}	GJ	19	24
CH Heating: Seasonal energy efficiency (Hs)	η_s	%	86	86
DHW heating: energy efficiency (Hs)	η_{wh}	%	81	81
Noise level	L_{WA}	dB	54	54

Technical data

Description	u. m.	City Plus 24 HE	City Plus 30 HE
Category		I2H3+	
Type		C12 - C32 - C42 - C52 - C62 - C82 - C92	
Operating temperature (min+max)	°C	0 ÷ +60	
Gas type		G20	
Max. heat input	kW	25.5	29.5
Min. heat input	kW	10.5 (DHW)	12.0 (DHW)
Max. heat output 60°/80°C *	kW	24.4	28.6
Min. heat output 60°/80°C *	kW	9.5	11.5
Max. heat output 30°/50°C *	kW	26.1	30.2
Min. heat output 30°/50°C *	kW	9.9	11.4
NOx Class		3	
Corrected CO 0% O ₂ (at Qn)	ppm	51.6	105.5
CO _v (at Qn)	%	6.80	7.10
Flue temperature (at Qn)	°C	82.7	73.4
Flue mass flow rate (at 60°/80°C and at Qn)	kg/h	55.27	61.13
EFFICIENCY			
Nominal efficiency (NCV) at 60°/80°C *	%	95.8	96.8
Efficiency at 30% Pn 60°/80°C *	%	—	—
Nominal efficiency at 30°/50°C *	%	102.3	102.5
Efficiency at 30% Pn 30°/50°C *	%	99.8	100.1
HEATING			
High/low temp. selection range (min+max)	°C	35÷78 / 20÷45	
Sec. zone temp. selection range (min+max)	°C	20÷78	
Expansion vessel	l	8	
Expansion vessel pressure	bar	1	
Max operating pressure	bar	2	
Max system temperature	°C	85	
DOMESTIC HOT WATER			
Flow rate at 25°C temperature rise	l/min	15.0	17.3
Flow rate at 30°C temperature rise	l/min	11.7	13.6
Min water flow (for the DHW function activation)	l/min	2.2	2.2
Min supply pressure (for the DHW function activation)	bar	0.5	0.5
Max supply pressure (data referred to the boiler only)	bar	6	
Temperature selection range (min+max)	°C	30÷55	30÷55
ELECTRICAL CHARACTERISTICS			
Voltage/Frequency (nominal voltage)	V/Hz	220÷240 / 50 (230V)	
Power consumption	W	95	111
Degree of protection		IP X4D	
DIMENSIONS			
Width - Height - Depth	mm	400 x 700 x 300	
Weight	kg	35.5	35.5
CONNECTIONS			
Hydraulic and gas connections		see page 10	
Split inlet/flue pipe diameter	mm	100/60	
Split system min ÷ max length	m	see page 9	
Split flue kit (inlet + outlet) diameter	mm	80 o 60	
Min ÷ max length of the split system	m	see page 9	
Fan residual head	Pa	—	
GAS SUPPLY PRESSURES			
Nominal pressure	mbar	20	
Inlet pressure (min+max)	mbar	17 ÷ 25	
GAS CONSUMPTION			
Q _{max}	m ³ /h	2.70	3.12
Q _{min}	m ³ /h	1.11	1.27

По вопросам продаж и поддержки обращайтесь:

Архангельск (8182)63-90-72
Астана +7(7172)727-132
Астрахань (8512) 99-46-04
Барнаул (3852) 73-04-60
Белгород (4722)40-23-64
Брянск (4832)59-03-52
Владивосток (423)249-28-31
Волгоград (844)278-03-48
Вологда (8172)26-41-59
Воронеж (473)204-51-73
Екатеринбург (343)384-55-89
Иваново (4932)77-34-06
Ижевск (3412)26-03-58
Казань (843)206-01-48

Калининград (4012)72-03-81
Калуга (4842)92-23-67
Кемерово (3842)65-04-62
Киров (8332)68-02-04
Краснодар (861)203-40-90
Красноярск (391)204-63-61
Курск (4712)77-13-04
Липецк (4742)52-20-81
Магнитогорск (3519)55-03-13
Москва (495)268-04-70
Мурманск (8152)59-64-93
Набережные Челны (8552)20-53-41
Нижний Новгород (831)429-08-12
Новокузнецк (3843)20-46-81

Новосибирск (383)227-86-73
Омск (3812) 21-46-40
Орел (4862)44-53-42
Оренбург (3532)37-68-04
Пенза (8412)22-31-16
Пермь (342)205-81-47
Ростов-на-Дону (863)308-18-15
Рязань (4912)46-61-64
Самара (846)206-03-16
Санкт-Петербург (812)309-46-40
Саратов (845)249-38-78
Севастополь (8692) 22-31-93
Симферополь (3652) 67-13-56
Смоленск (4812)29-41-54

Сочи (862)225-72-31
Ставрополь (8652)20-65-13
Сургут (3462) 77-98-35
Тверь (4822)63-31-35
Томск (3822)98-41-53
Тула (4872)74-02-29
Тюмень (3452)66-21-18
Ульяновск (8422)24-23-59
Уфа (347)229-48-12
Хабаровск (4212) 92-98-04
Челябинск (351)202-03-61
Череповец (8202)49-02-64
Ярославль (4852)69-52-93

сайт: <http://italtherm.nt-rt.ru/> || эл. почта: imr@nt-rt.ru